

At a glance

Your new Moto X™ has a bright display that goes from one side all the way to the other. Its curved body fits in your hand. And you'll rarely have to plug it in.

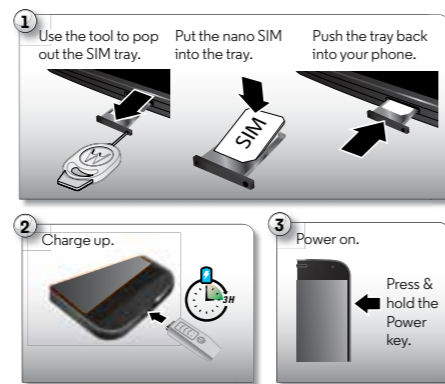
Caution: Before using your phone, please read the safety, regulatory and legal information provided with your product.

Note: Your phone may look a little different.



Charge up

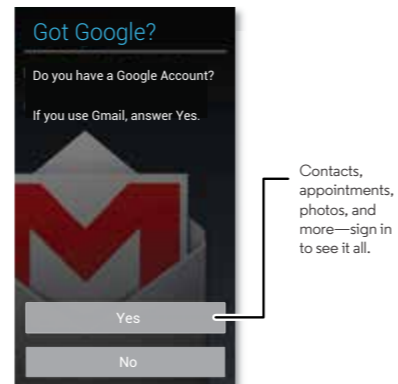
Put the SIM in, charge up, and power on. (Your SIM may already be in your phone. If it is, just charge up and power on.)



Sign in

If you use Gmail™, you already have a Google™ account—if not, you can make an account now. When you sign in with your Google account, all your contacts, calendar, and email automatically appear, just like magic.

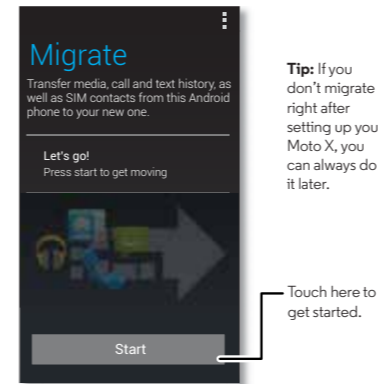
Just select your language and follow the screen prompts to get started.



Motorola Migrate

Moving your photos, music, text & call history, contacts and more from your old Android™ phone is quick and painless—we promise.

On your old Android phone, download the Motorola Migrate app on Google Play™ to get started. Then on your new phone, touch Apps → **Migrate** and follow the instructions on your screen.

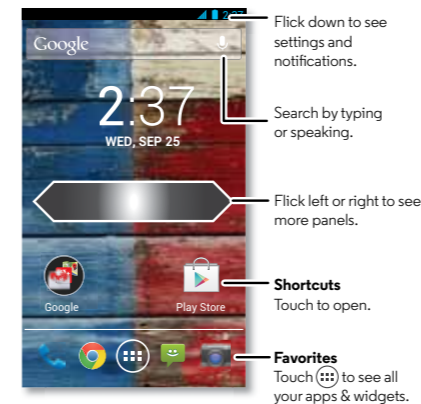


Tip: If you don't migrate right after setting up your Moto X, you can always do it later.

Home screen & apps

Start from the home screen. Explore your apps. Change your wallpaper and sounds.

- **Customize:** Change Wi-Fi, brightness, and more—flick the status bar down and touch . Touch for more settings.
- **Search:** Type in the Google Search box at the top of your home screen, or touch and speak.
- **Add shortcuts & widgets:** Touch Apps , touch and hold an app or widget, then drag it to your home screen. (To see widgets, touch Apps → **WIDGETS** at the top.)

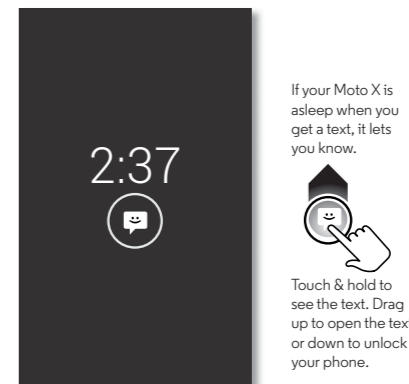


Active notifications

See messages, calls, and more coming in to Moto X, no matter what screen you're on. Even when your Moto X is sleeping, info quietly appears on your screen to tell you what you need to know—you choose the alerts.

Or try **Motorola Connect**. If you're on your computer, you can answer texts using your keyboard. Know who's calling before you reach for your phone.

Find it: Apps → **Settings** → **Active Notifications** → **Motorola Connect**



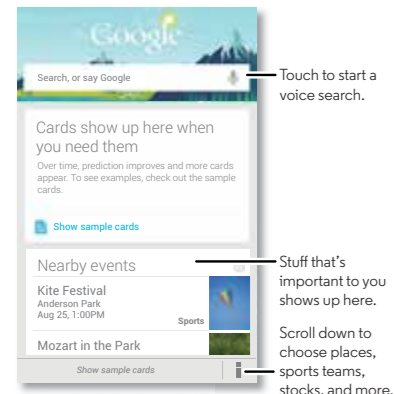
SAR This product meets the applicable limit for exposure to radio waves (known as SAR) of 1.6 W/kg (FCC & IC). The limits and guidelines include a substantial safety margin designed to assure the safety of all persons, regardless of age and health. The highest SAR values measured for this device are listed in the regulatory information packaged with your product. Note: When using the product while worn on your body, maintain a distance of 2.5 cm from the body to ensure compliance with SAR requirements. Note that the product may be transmitting even if you are not making a phone call.



Google Now™

What's going on in your world? Current traffic, weather, stocks, sports scores, your appointments. The right information at just the right time.

Find it: Home —flick up to the icon



Touchless control

Tell your Moto X what you want without touching it, even if it's asleep on the table.

- **Train it:** Touch Apps → **Settings** → **Touchless Control** to train your phone to recognize your voice.
- **Remember it:** The magic words to wake up your Moto X are, “OK Google Now.”
- **Say it:** Just say, “OK Google Now” followed by a command whenever you need something. For a list of commands, say, “OK Google Now, **help me.**”

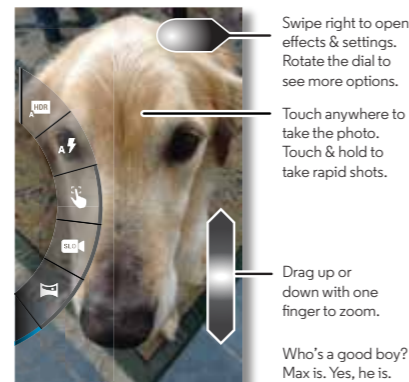


Quick photos

Take super clear photos with a twist of your wrist and a tap on the screen.

- **Launch it:** Even when your phone is asleep, twist your wrist twice, quickly, to launch camera anytime.
- **Take a photo:** Touch anywhere on the screen to take the photo.
- **Share it:** Swipe the screen left to view a photo or video from your gallery, then touch Share .

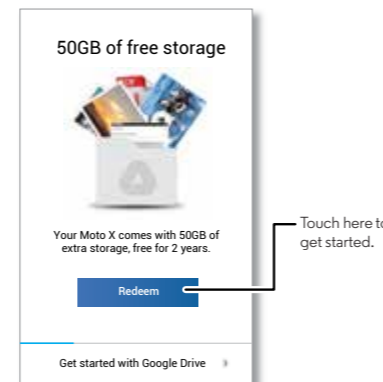
Tip: Touch Apps → **Camera**, swipe the screen right and touch to turn Quick Capture on or off.



Google Drive™

All your photos, videos, documents, and more safely in one place—private unless you choose to share. Available on Google Drive from all your devices.

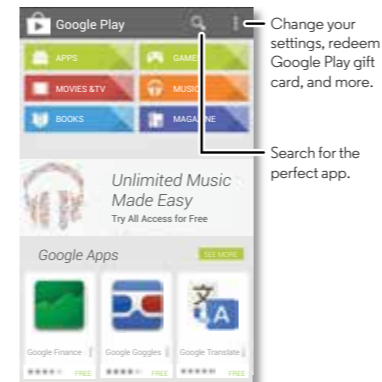
And with Moto X, you have 50 GB of extra storage for the next two of years on top of the 15 GB you already get from Google. Touch Apps → **Drive** to redeem this special offer.



Google Play

Google Play is a new digital content experience from Google where you can find and enjoy your favorite music, movies, TV shows, books, magazines, and Android apps and games. It's your entertainment hub: you can access it from the web or from your Android device, and all your content is instantly available across your devices.

Find it: Apps → **Play Store**



Get more

There's more help, updates, and information right here:

- **Answers:** Touch Apps → **Moto Care** to get walk-through tutorials or chat with people who can help, right on your phone.
- **Updates:** Get phone updates, PC software, online help, guides, and more at www.motorola.com/mymotoX.
- **Accessories:** Find accessories for your Moto X at www.motorola.com/mobility.
- **Apps:** Touch Apps → **Play Store**.
- **News:** Get the latest news, tips & tricks, videos and so much more—join us on:
 - YouTube™ www.youtube.com/motorola
 - Facebook™ www.facebook.com/motorola
 - Twitter www.twitter.com/motomobile
 - Google+™ www.google.com/+Motorola/posts

For Your Safety

Before assembling, charging or using your mobile device for the first time, please read the important product safety and legal information provided with your product. **Warning:** Don't try to remove or replace the battery yourself—doing so may damage the battery and could cause burning and injury. If your phone becomes unresponsive, try a reboot—press and hold both the Power and the Volume Down keys until the screen goes dark, and your phone restarts.

Specific Absorption Rate (FCC & IC)

YOUR MOBILE DEVICE MEETS FCC AND IC LIMITS FOR EXPOSURE TO RADIO WAVES.

Your mobile device is a radio transmitter and receiver. It is designed not to exceed the limits for exposure to radio waves (radio frequency electromagnetic fields) adopted by the Federal Communications Commission (FCC) and Industry Canada (IC). These limits include a substantial safety margin designed to assure the safety of all persons, regardless of age and health.

The radio wave exposure guidelines use a unit of measurement known as the Specific Absorption Rate, or SAR. The SAR limit for mobile devices is 1.6 W/kg. Tests for SAR are conducted using standard operating positions with the device transmitting at its highest certified power level in all tested frequency bands. The highest SAR values under the FCC and IC guidelines for your device model are listed below:

Head SAR	LTE Band 4, Wi-Fi, Bluetooth	1.21 W/kg
Body-worn SAR	GSM 850, Wi-Fi, Bluetooth	0.65 W/kg

During use, the actual SAR values for your device are usually well below the values stated. This is because, for purposes of system efficiency and to minimize interference on the network, the operating power of your mobile device is automatically decreased when full power is not needed for the call. The lower the power output of the device, the lower its SAR value.

If you are interested in further reducing your RF exposure then you can easily do so by limiting your usage or simply using a hands-free kit to keep the device away from the head and body.

Additional information can be found at www.motorola.com/rfhealth.

Usage

This phone supports apps and services that may use a lot of data, so make sure your data plan meets your needs. Contact your service provider for details. Certain apps and features may not be available in all countries.

Copyright & Trademarks

Certain features, services and applications are network dependent and may not be available in all areas; additional terms, conditions and/or charges may apply. Contact your service provider for details.

All features, functionality, and other product specifications, as well as the information contained in this guide, are based upon the latest available information and believed to be accurate at the time of printing. Motorola reserves the right to change or modify any information or specifications without notice or obligation.

Note: The images in this guide are examples only. MOTOROLA and the Stylized M Logo are trademarks or registered trademarks of Motorola Trademark Holdings, LLC. Android, Google, Google Play, and other trademarks are owned by Google Inc. The Android robot is reproduced or modified from work created and shared by Google and used according to terms described in the Creative Commons 3.0 Attribution License. All other product or service names are the property of their respective owners.

© 2013 Motorola Mobility LLC. All rights reserved.
Product ID: Moto X (Model XT1058)
Manual Number: 68017489001-A